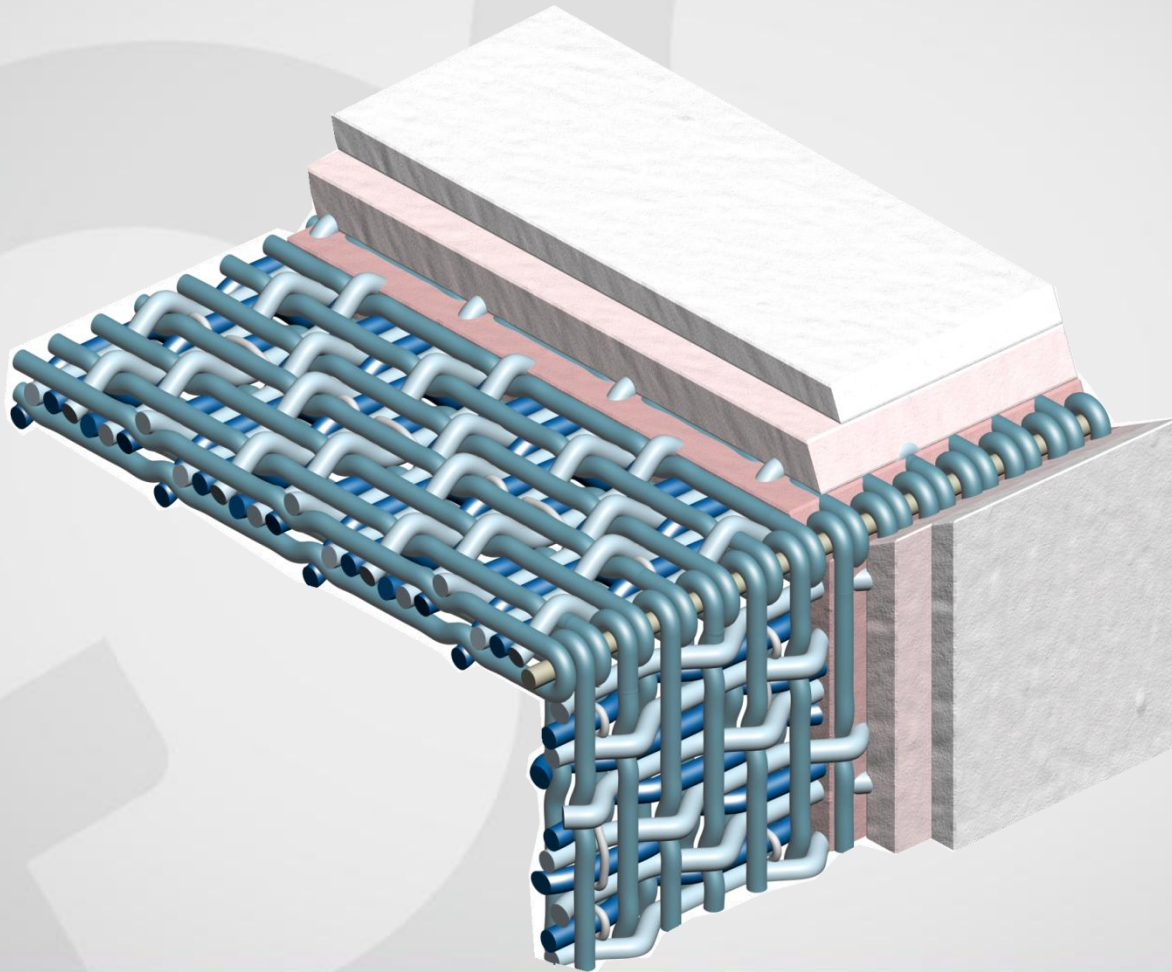
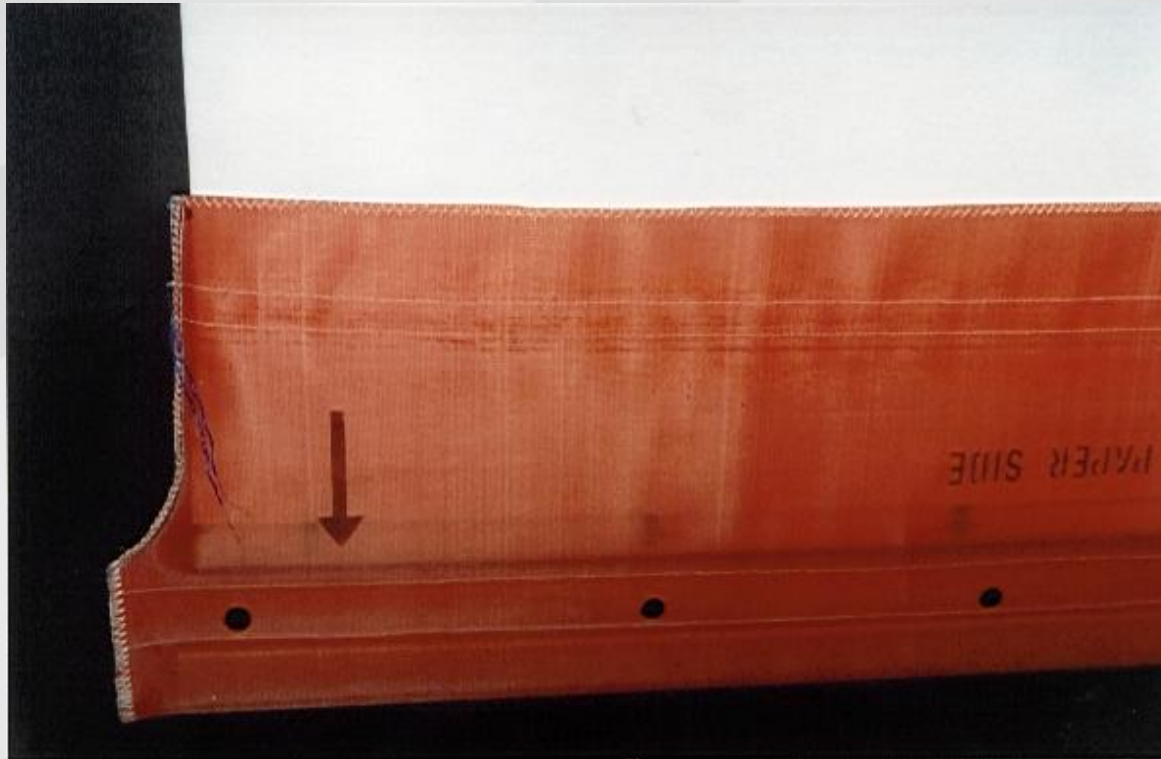


# *Cristini seamed felt seaming procedure*

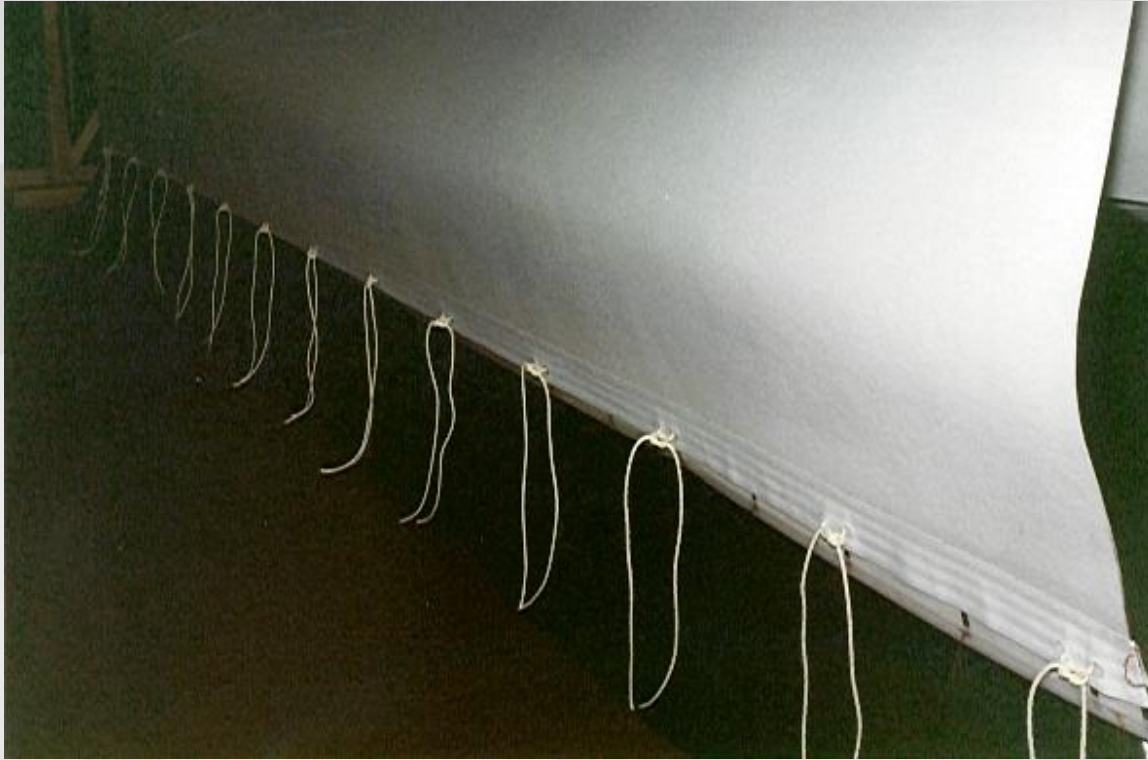


# *Seaming procedure*



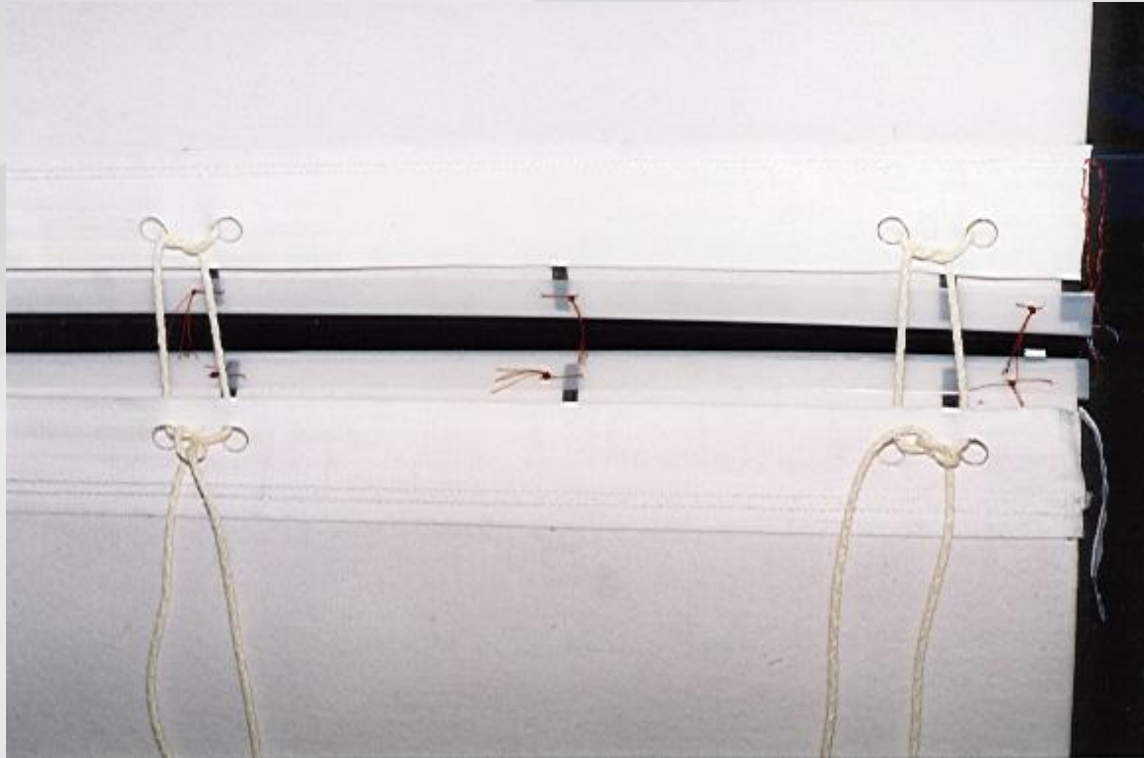
*1 - View of unpacked felt with rectangular leader.*

# *Seaming procedure*



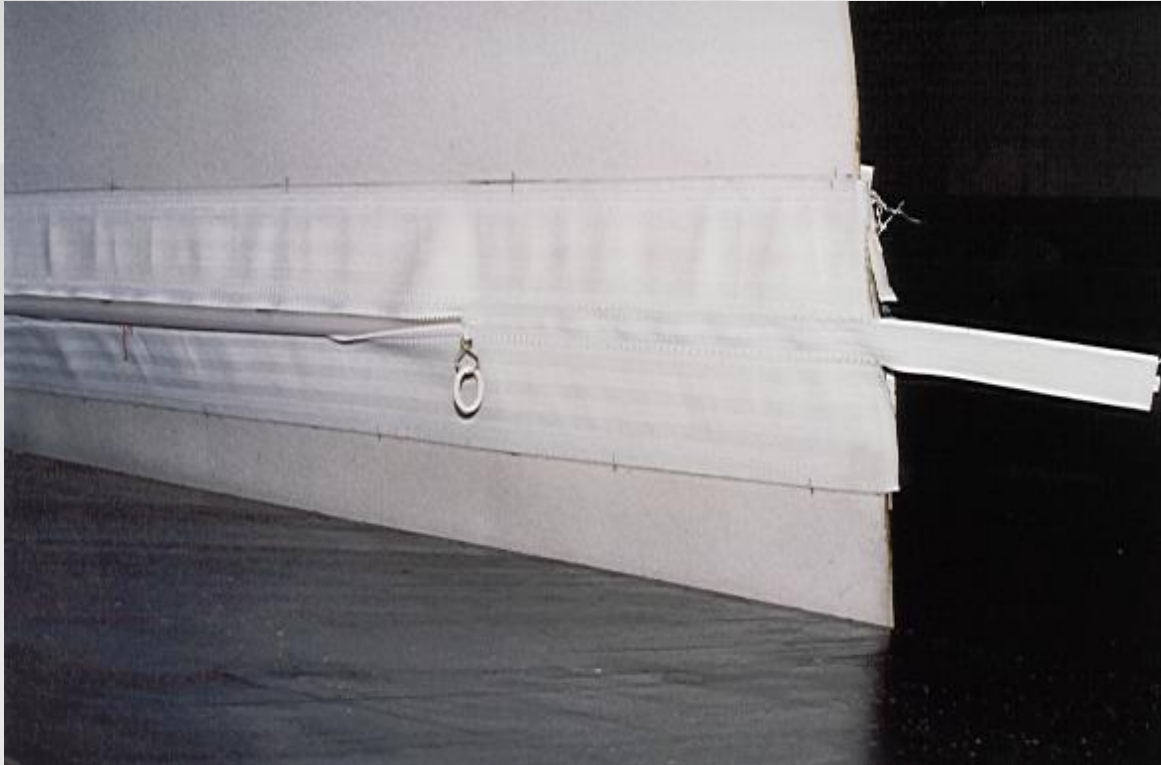
*2 - View of the opposite end.*

# Seaming procedure



*3 - Remove the felt from its packing. The felt is supplied ready to be installed in the machine direction. After installation remove the rectangular leader and pull the two ends together by tying the ropes.*

# *Seaming procedure*



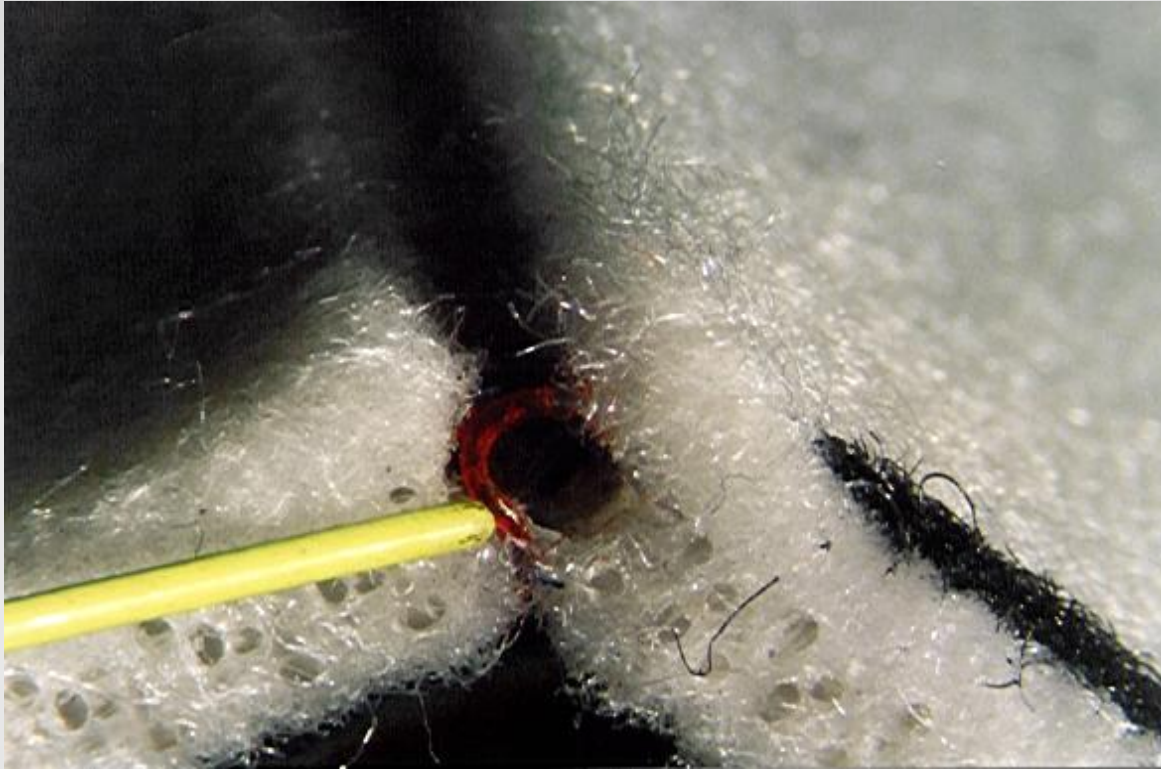
*4 - Use the zipper assist to zip the two ends together.*

# *Seaming procedure*



*5 - Remove the plastic seam protections on both ends and pull out the pintles from the edges.*

# *Seaming procedure*



*6 - Make sure that the alignment marks coincide. Begin seaming, starting from the marked side of the felt. The first external loop must be red.*

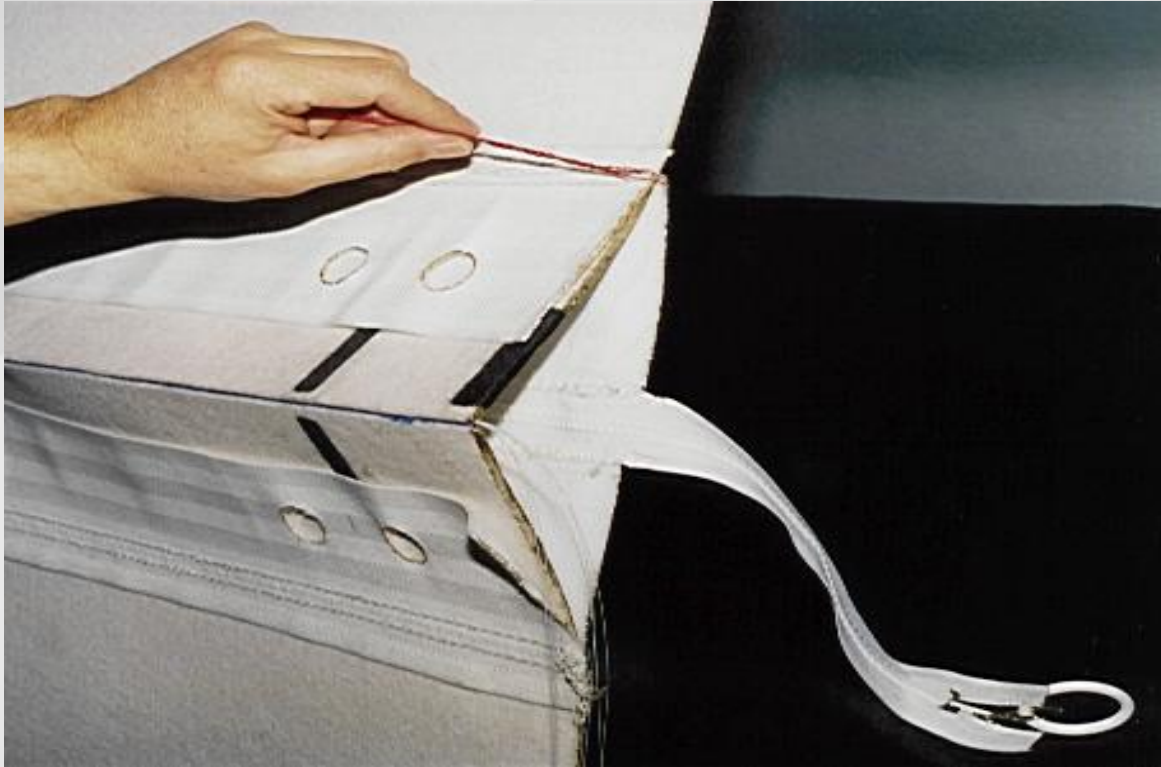
# Seaming procedure



*7 - Continue seaming and use the flashlight to check that the loops have been meshed properly and that the pintle pin has gone through all the loops correctly. If the pintle lead wire gets stuck somewhere or misses a loop, pull it back and start again from that point. See picture 7/1.*

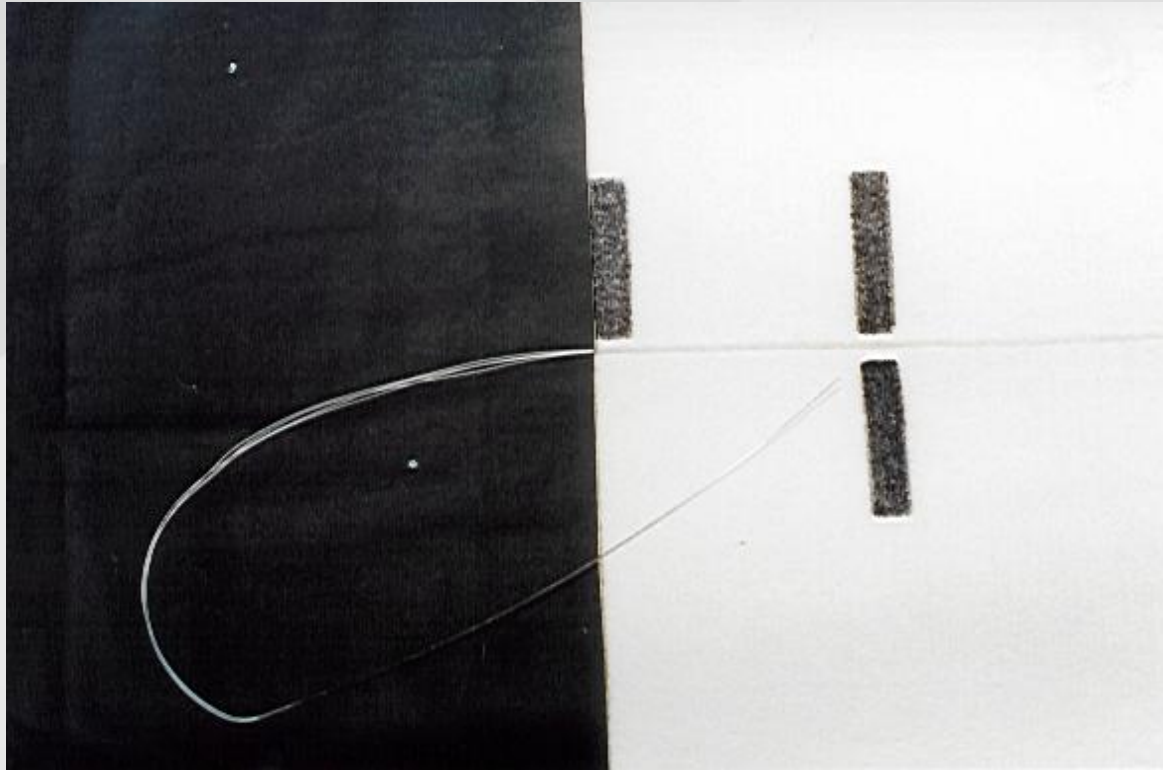


# *Seaming procedure*



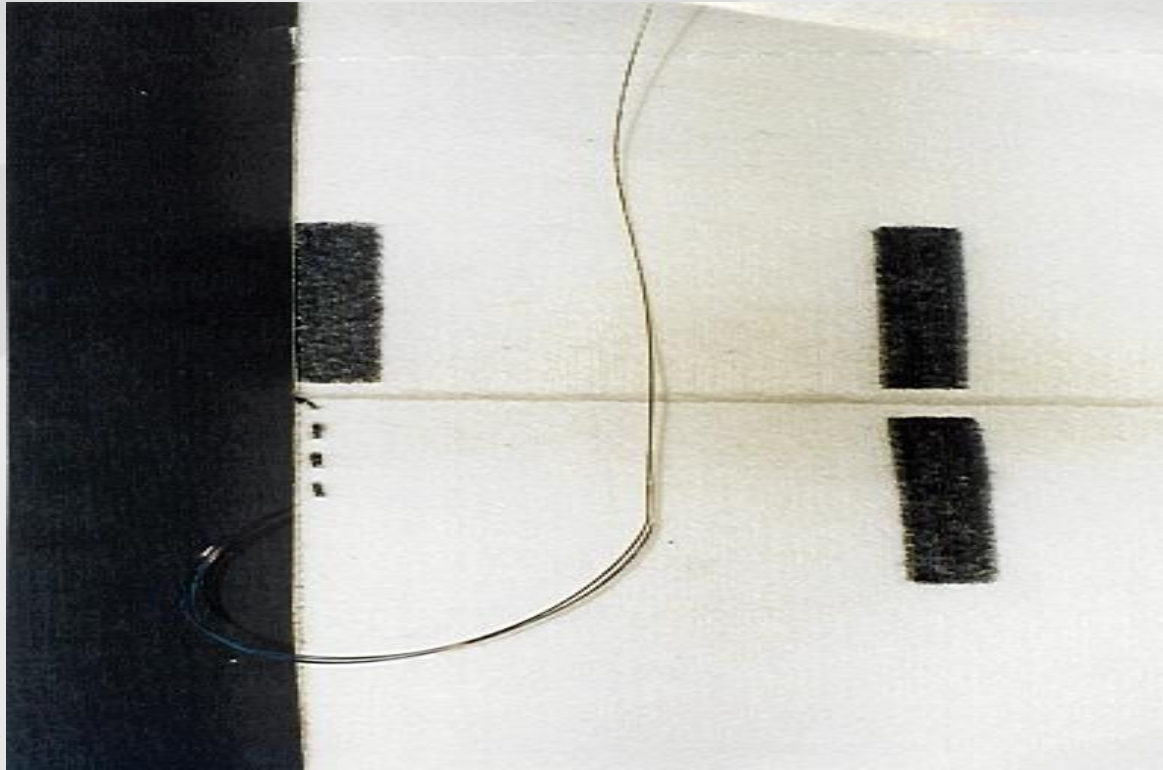
*8 -Once the seam has been completed, remove the support device by pulling the red sewing threads.*

# *Seaming procedure*



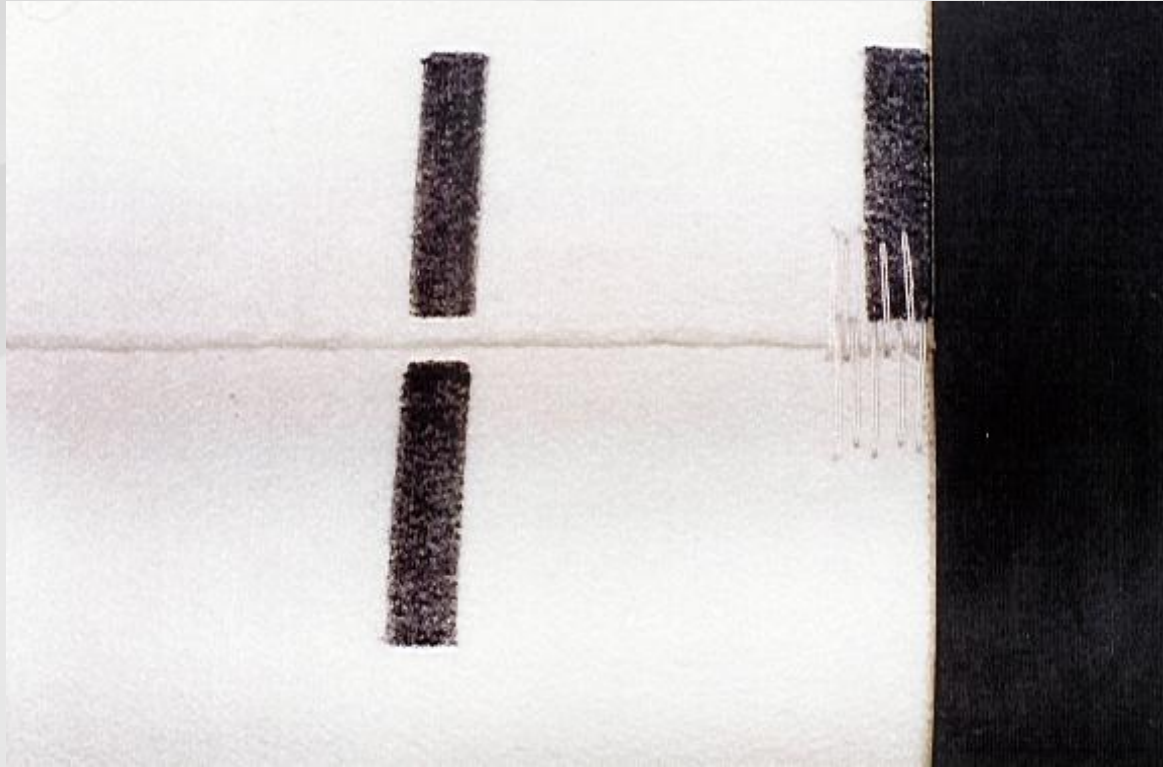
*9 - View of the marked side of the felt when the seam has been completed.*

# Seaming procedure



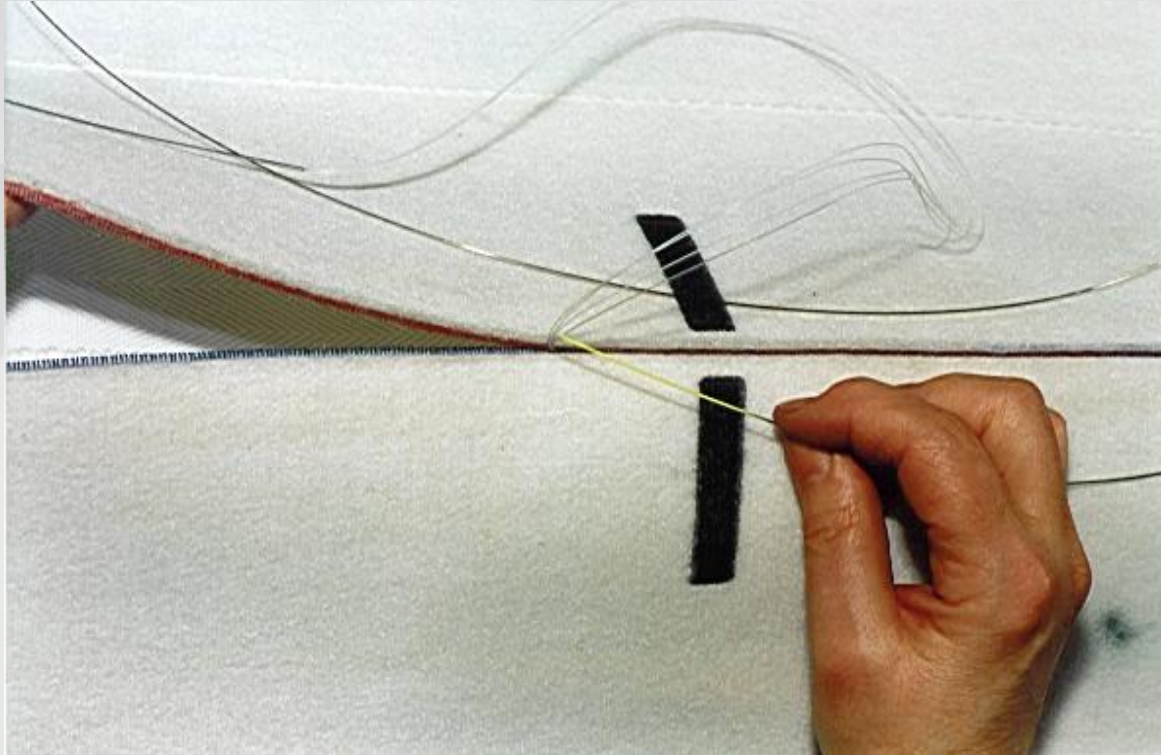
*10 - Tension the felt and, on both edges, secure both the pindle pins by using on one edge, the pindle pin end as a needle and on the other edge the steel leader snapped to about 15 centimeters.*

# Seaming procedure



*11 - Secure both pintle pin ends by sewing longitudinally on the felt with the needle and thread, then cover the area with the resin supplied with the seaming kit.*

# Seaming procedure



*7/1 - In the event the pintle lead wire gets stuck while seaming, pull the lead wire out of the felt and re-insert it making sure it goes through the loops properly aligned.*